

**REVIEWED**

By Anne Nord at 3:25 pm, Feb 19, 2019

2/13/2019

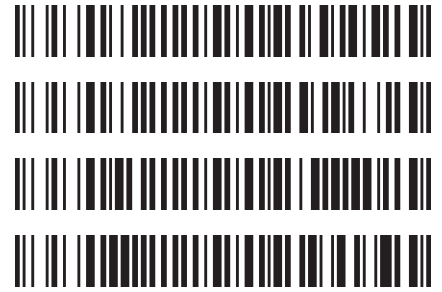
CG

**Worklist: 2946**

**REVIEWED**

By Britany Wylie at 1:08 pm, Feb 27, 2019

<u>LAB_CASE</u>	<u>ITEM</u>	<u>TASK_ID</u>	<u>DESCRIPTION</u>
C2019-0254	2	139542	AM 3 Urine Carboxy-THC
C2019-0278	4	139545	AM 3 Urine Carboxy-THC
M2019-0626	1	139547	AM 3 Urine Carboxy-THC
P2019-0450	1	139543	AM 3 Urine Carboxy-THC



Data Path : G:\TOX\Pocatello\MMS\CDS\2019\am 3 worklist 2946\  
Data File : THC-PC1.D  
Acq On : 19 Feb 2019 10:35  
Operator : ISP\datastor  
Sample : Spiked Positive c-THC Control  
Misc : c-THC lot # 0497429 in Negative Lot # POC062718; Worklist 2946  
ALS Vial : 22 Sample Multiplier: 1

Integration Parameters: events.e  
Integrator: ChemStation

Method : C:\gcms\1\methods\TOX.M  
Title :

Signal : EIC Ion 371.00 (370.70 to 371.70): THC-PC1.D\data.ms

peak #	R.T. min	first scan	max scan	last scan	PK TY	peak height	corr. area	corr. % max.	% of total
1	5.725	41	49	63	VV	209	2878	3.67%	2.845%
2	6.514	303	323	326	PV	100	1319	1.68%	1.303%
3	6.577	326	345	362	VV	4135	78354	100.00%	77.447%
4	6.803	394	423	440	BV	118	3185	4.06%	3.148%
5	6.934	443	469	476	VV	106	3369	4.30%	3.330%
6	6.999	481	491	516	VV	225	6286	8.02%	6.213%
7	7.211	547	565	582	VV	182	5781	7.38%	5.714%

Sum of corrected areas: 101171  
Signal : EIC Ion 473.00 (472.70 to 473.70): THC-PC1.D\data.ms

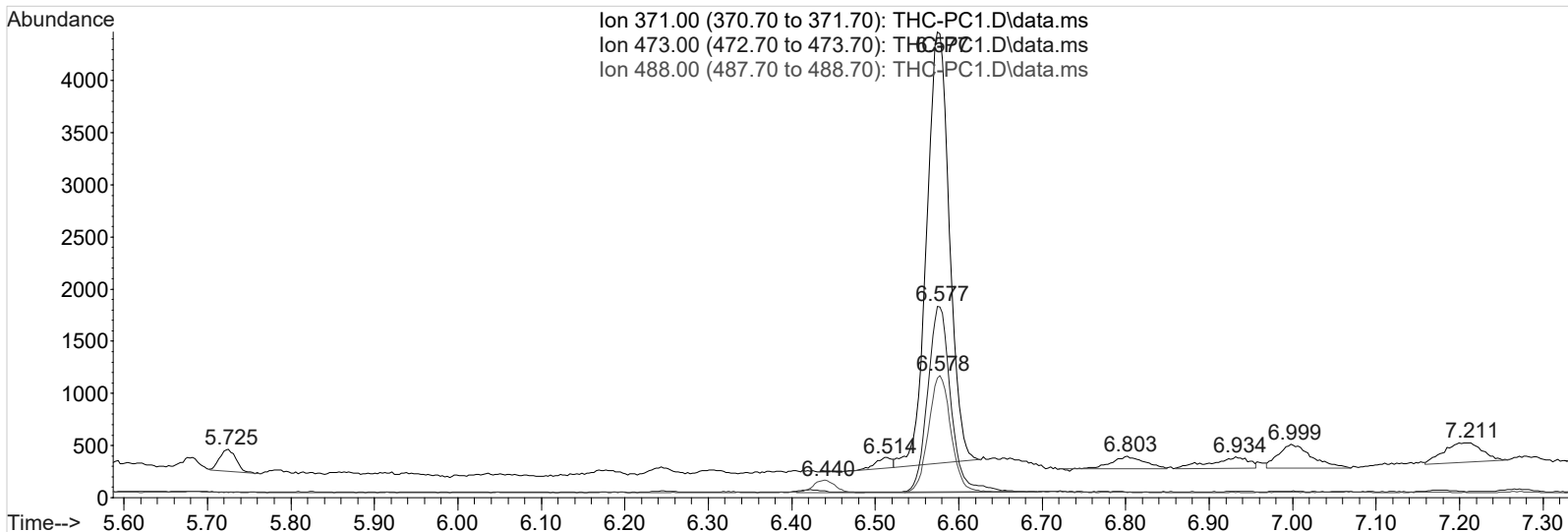
peak #	R.T. min	first scan	max scan	last scan	PK TY	peak height	corr. area	corr. % max.	% of total
1	6.577	329	345	385	BB	1779	34118	100.00%	100.000%

Sum of corrected areas: 34118  
Signal : EIC Ion 488.00 (487.70 to 488.70): THC-PC1.D\data.ms

peak #	R.T. min	first scan	max scan	last scan	PK TY	peak height	corr. area	corr. % max.	% of total
1	6.440	285	297	314	BB 2	116	2084	9.98%	9.070%
2	6.578	330	345	377	BB	1113	20894	100.00%	90.930%

Sum of corrected areas: 22978

TOX.M Tue Feb 19 13:46:32 2019



Data Path : G:\TOX\Pocatello\MMS\CDS\2019\am 3 worklist 2946\  
Data File : THC-PC2.D  
Acq On : 19 Feb 2019 12:46  
Operator : ISP\datastor  
Sample : Spiked Positive c-THC Control  
Misc : c-THC lot # 0497429 in Negative Lot # POC062718; Worklist 2946  
ALS Vial : 22 Sample Multiplier: 1

Integration Parameters: events.e  
Integrator: ChemStation

Method : C:\gcms\1\methods\TOX.M  
Title :

Signal : EIC Ion 371.00 (370.70 to 371.70): THC-PC2.D\data.ms

peak #	R.T. min	first scan	max scan	last scan	PK TY	peak height	corr. area	corr. % max.	% of total
1	5.722	39	48	61	VV	199	2695	3.83%	3.174%
2	6.521	299	325	327	BV	81	1295	1.84%	1.525%
3	6.572	327	343	360	VV	3779	70345	100.00%	82.835%
4	6.995	479	490	515	VV	205	5786	8.23%	6.813%
5	7.201	541	561	580	BV	172	4802	6.83%	5.654%

Sum of corrected areas: 84922  
Signal : EIC Ion 473.00 (472.70 to 473.70): THC-PC2.D\data.ms

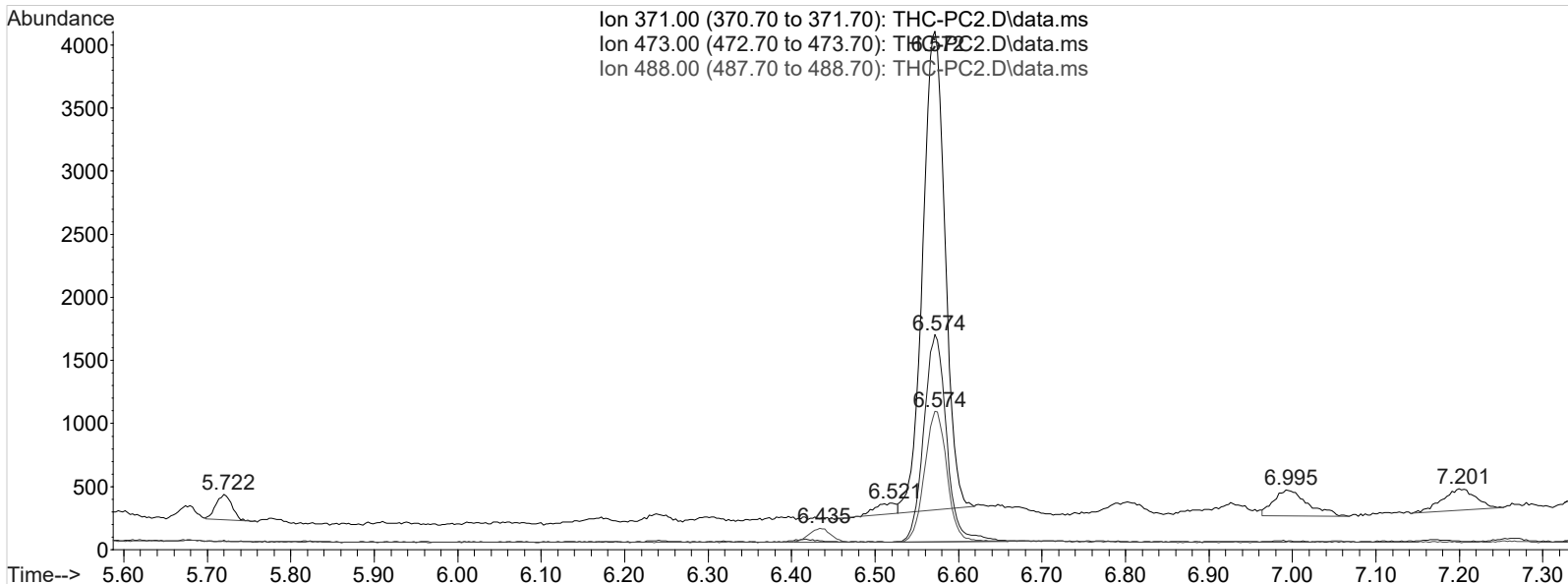
peak #	R.T. min	first scan	max scan	last scan	PK TY	peak height	corr. area	corr. % max.	% of total
1	6.574	325	344	380	BB	1633	31075	100.00%	100.000%

Sum of corrected areas: 31075  
Signal : EIC Ion 488.00 (487.70 to 488.70): THC-PC2.D\data.ms

peak #	R.T. min	first scan	max scan	last scan	PK TY	peak height	corr. area	corr. % max.	% of total
1	6.435	284	296	309	BB 2	110	1935	10.05%	9.135%
2	6.574	329	344	374	BB	1033	19251	100.00%	90.865%

Sum of corrected areas: 21187

TOX.M Tue Feb 19 13:47:10 2019



Data Path : G:\TOX\Pocatello\MMS\CDS\2019\am 3 worklist 2946\  
Data File : THC-NC.D  
Acq On : 19 Feb 2019 10:24  
Operator : ISP\datastor  
Sample : Negative Control  
Misc : Lot # POC062718; AM #3 Worklist 2946  
ALS Vial : 21 Sample Multiplier: 1

Integration Parameters: events.e  
Integrator: ChemStation

Method : C:\gcms\1\methods\TOX.M  
Title :

Signal : EIC Ion 371.00 (370.70 to 371.70): THC-NC.D\data.ms

peak #	R.T. min	first scan	max scan	last scan	PK TY	peak height	corr. area	corr. % max.	% of total
1	7.208	529	564	579	PV	95	2654	100.00%	100.000%

Sum of corrected areas: 2654

Signal : EIC Ion 473.00 (472.70 to 473.70): THC-NC.D\data.ms

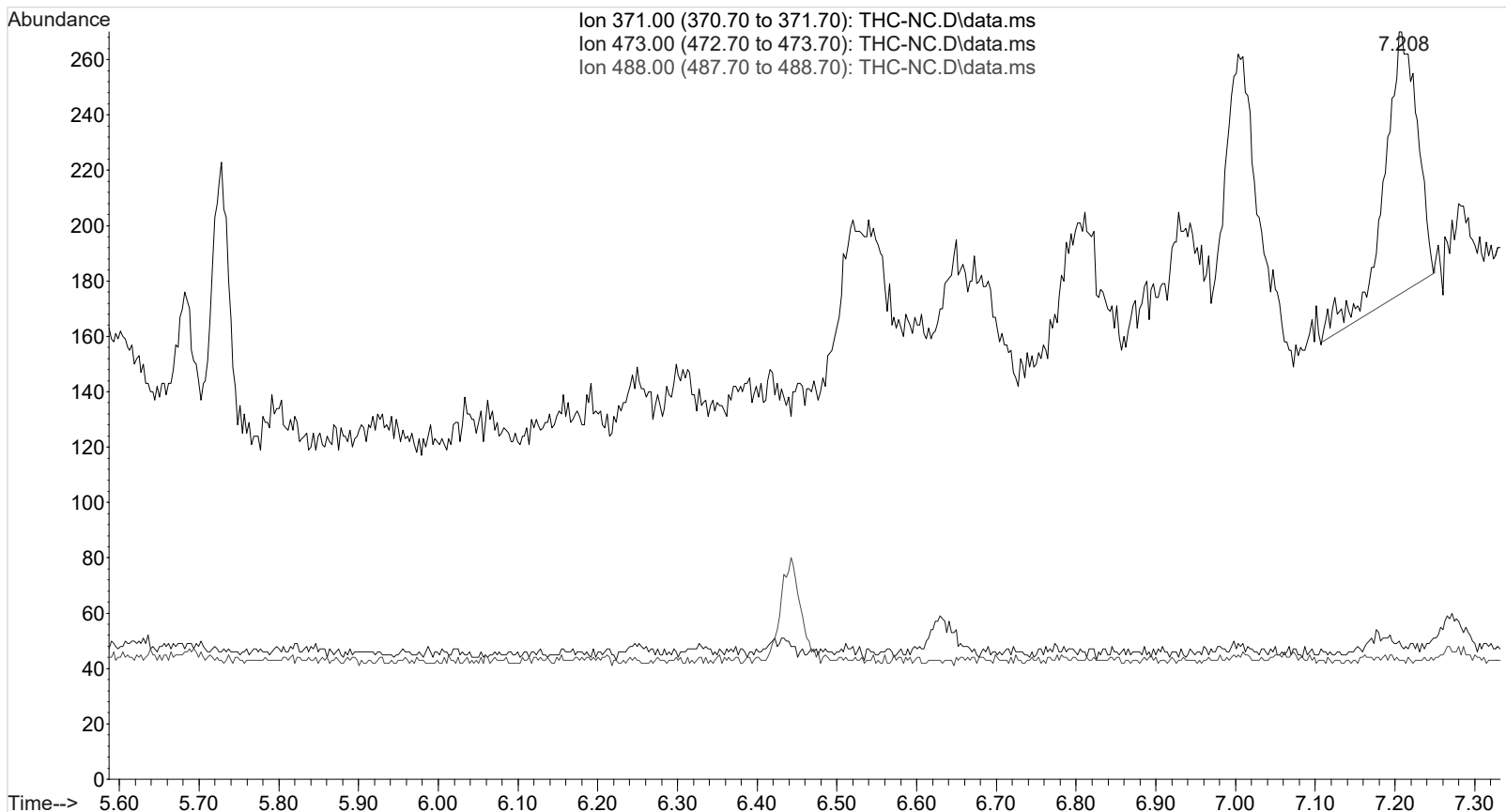
peak #	R.T. min	first scan	max scan	last scan	PK TY	peak height	corr. area	corr. % max.	% of total
No peaks were detected using the method integration parameters!									

No peaks were detected using the method integration parameters!  
Signal : EIC Ion 488.00 (487.70 to 488.70): THC-NC.D\data.ms

peak #	R.T. min	first scan	max scan	last scan	PK TY	peak height	corr. area	corr. % max.	% of total
No peaks were detected using the method integration parameters!									

No peaks were detected using the method integration parameters!

TOX.M Tue Feb 19 13:47:34 2019



Data Path : G:\TOX\Pocatello\MMS\CDS\2019\am 3 worklist 2946\  
 Data File : THC-C3.D  
 Acq On : 19 Feb 2019 10:57  
 Operator : ISP\datastor  
 Sample : Biorad C3 Control  
 Misc : C3 Lot # 68460; Worklist 2946  
 ALS Vial : 23 Sample Multiplier: 1

Integration Parameters: events.e  
 Integrator: ChemStation

Method : C:\gcms\1\methods\TOX.M  
 Title :

Signal : EIC Ion 371.00 (370.70 to 371.70): THC-C3.D\data.ms

peak #	R.T. min	first scan	max scan	last scan	PK TY	peak height	corr. area	corr. % max.	% of total
1	5.721	39	47	58	VV	156	2121	8.83%	8.111%
2	6.572	307	343	360	BV	1185	24026	100.00%	91.889%

Sum of corrected areas: 26147

Signal : EIC Ion 473.00 (472.70 to 473.70): THC-C3.D\data.ms

peak #	R.T. min	first scan	max scan	last scan	PK TY	peak height	corr. area	corr. % max.	% of total
1	6.572	317	343	359	PV	493	9166	100.00%	100.000%

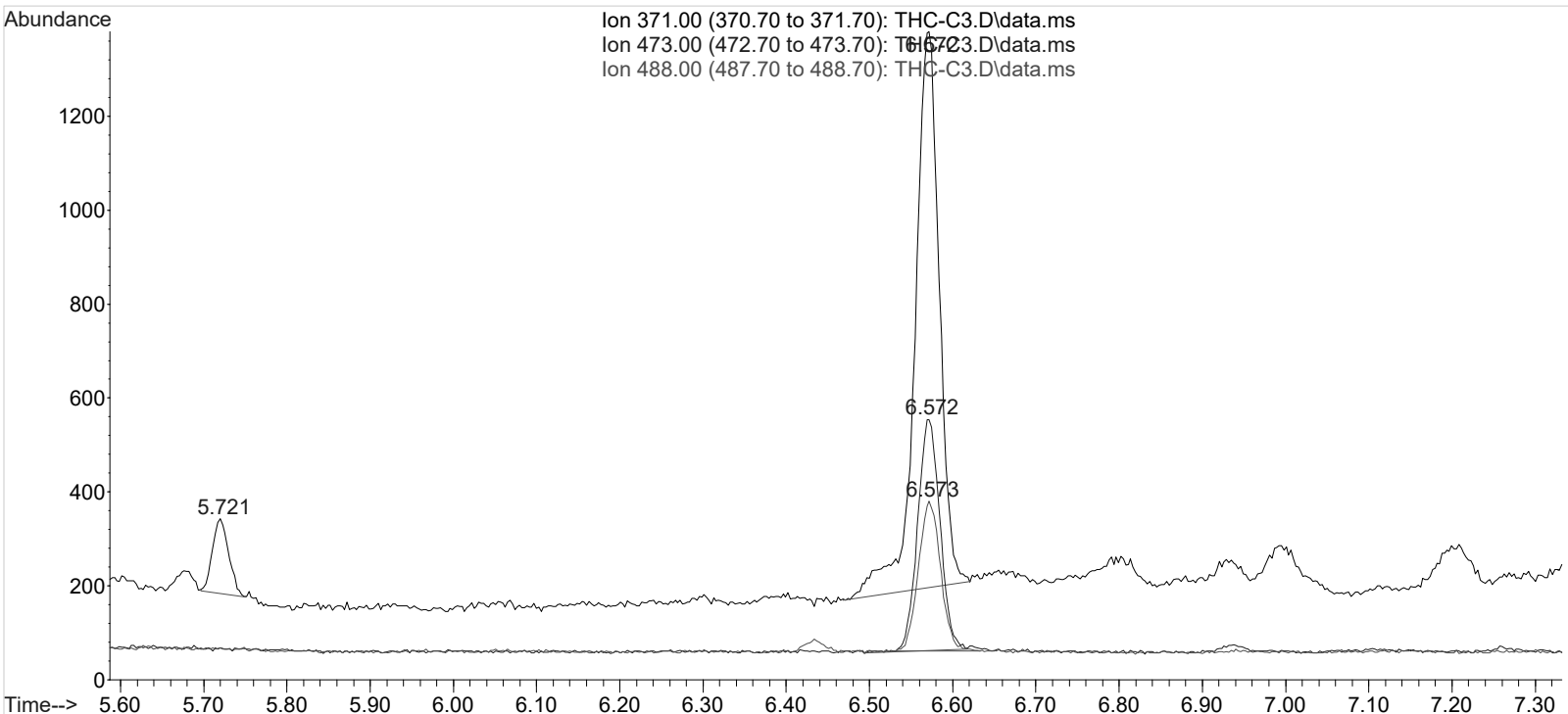
Sum of corrected areas: 9166

Signal : EIC Ion 488.00 (487.70 to 488.70): THC-C3.D\data.ms

peak #	R.T. min	first scan	max scan	last scan	PK TY	peak height	corr. area	corr. % max.	% of total
1	6.573	329	343	364	BB	317	5894	100.00%	100.000%

Sum of corrected areas: 5894

TOX.M Tue Feb 19 13:47:47 2019



AM 3 carboxy-THC Calculations Sheet

Run Date: 2/19/2019

Worklist #: 2946

Laboratory Case #: BioRad C3 Lot: 68460

Case Calculations:

EIC Ion 371 Corr. Area: 24026

EIC Ion 473 Corr. Area: 9166

EIC Ion 488 Corr. Area: 5894

473:371 Ratio: 0.382

488:371 Ratio: 0.245

Quality Control Calculations:

1st Control

2nd Control

EIC Ion 371 Corr. Area: 78354

70345

EIC Ion 473 Corr. Area: 34118

31075

EIC Ion 488 Corr. Area: 20894

19251

Ratio of 473:371: 0.435

0.442

Average: 0.439

Ratio of 488:371: 0.267

0.274

Average: 0.270

Acceptable Retention Time Range: 6.477

to 6.672

Approximate Minimum Corrected Area of 371 Ion: 15671

Acceptable 473:371 Ratio Range: 0.351

to 0.526

Acceptable 488:371 Ratio Range: 0.216

to 0.324